



**Bluetooth Setup guide for Disc Wireless Meters**  
**Revision Date: March 31st, 2008**

## **Installing the Drivers for the Bluetooth USB Dongle:**

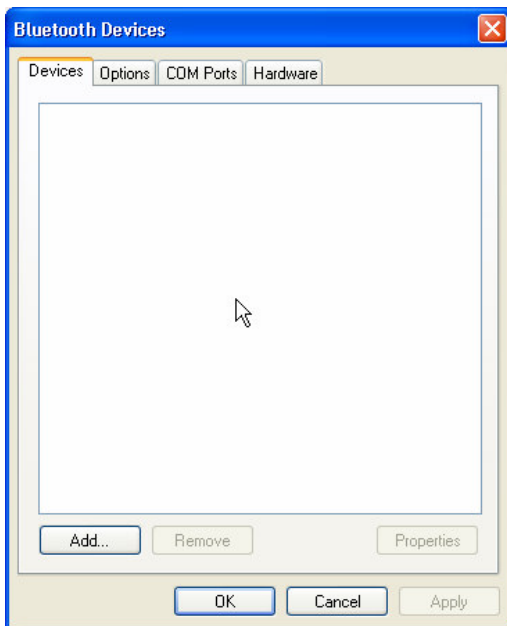
The USB Bluetooth dongle can be operated with either the built in windows drivers(recommended for Vista users) or with the included Toshiba Bluetooth drivers. Below you will find the instructions on how to set up for both.

### **Using the Windows Built in Bluetooth Driver**

1. Plug in the USB dongle into an available USB port(Note: You should always use the same USB port for the dongle)
2. A message will pop up saying “Found new Hardware”. Several messages will pop up after this. Wait until a message pops up saying “Your hardware is now set up and ready to use”.
3. You will notice a small Blue icon in the system tray as shown in the picture below.



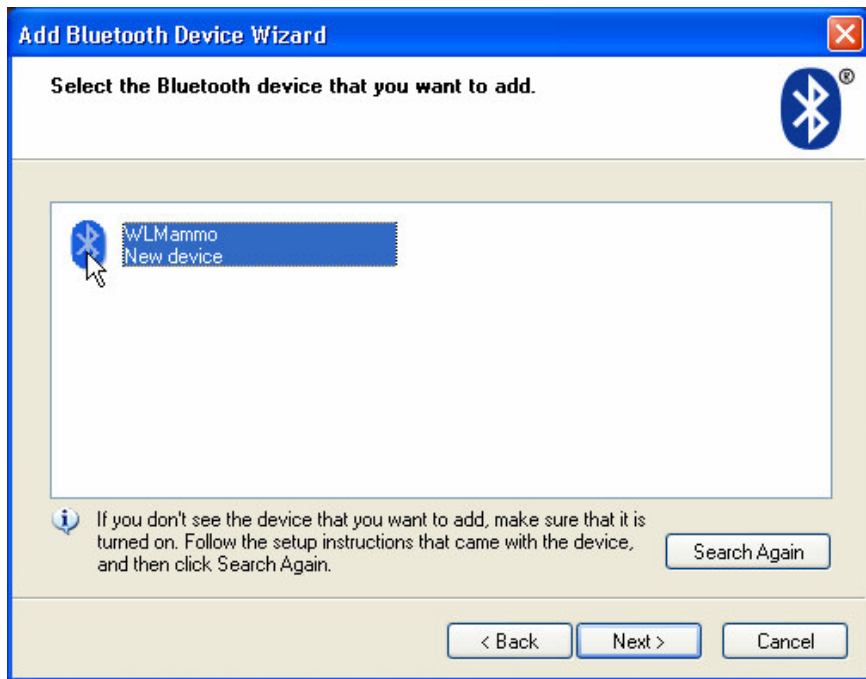
4. Double click on this icon and you will see the following window pop up.



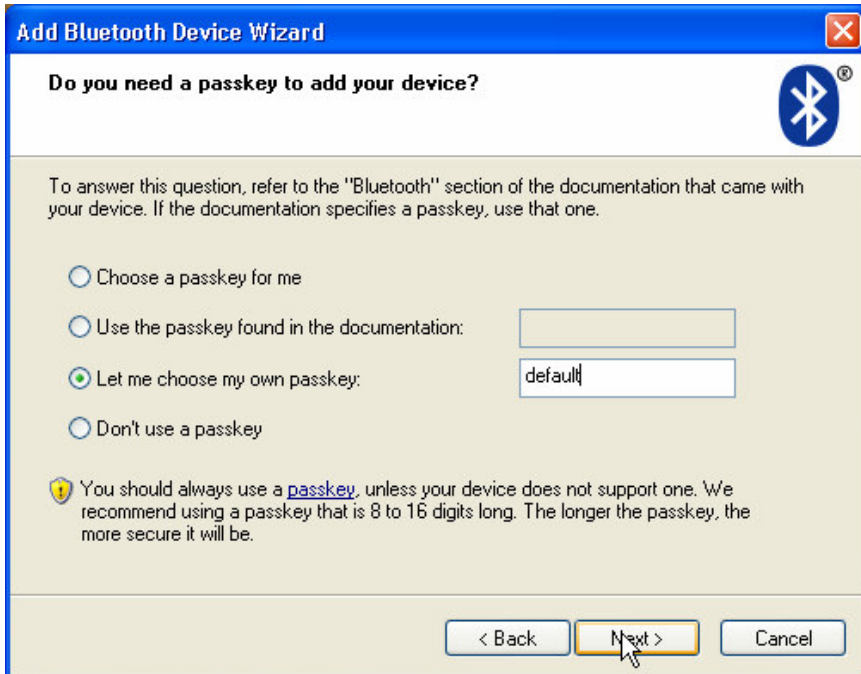
5. Click on the Add... button and you will see the following. Click the box labeled “My device is set up and ready to be found”. Turn on the Wireless cassette, then click the Next button.



6. Wait 10 to 20 seconds. The window in the picture below should pop up (If it doesn't find the meter the first time, make sure the cassette is on and that the yellow LED is flashing, then click on the try again button). Select the Icon in the list(in this case it's WLMammo) and then click on the Next button.



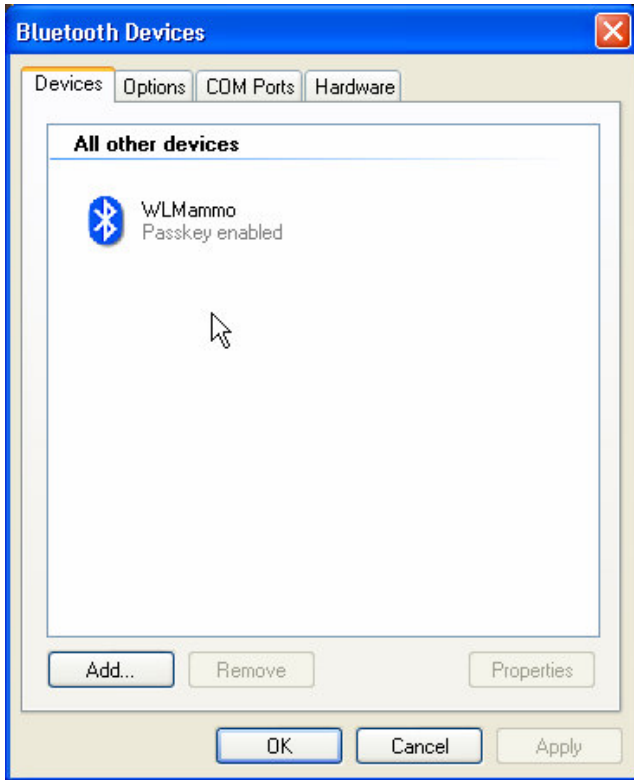
7. The following window will pop up asking about passkeys. Select the “Let me choose my own passkey” option and type in default in the box as shown. Click next to continue.



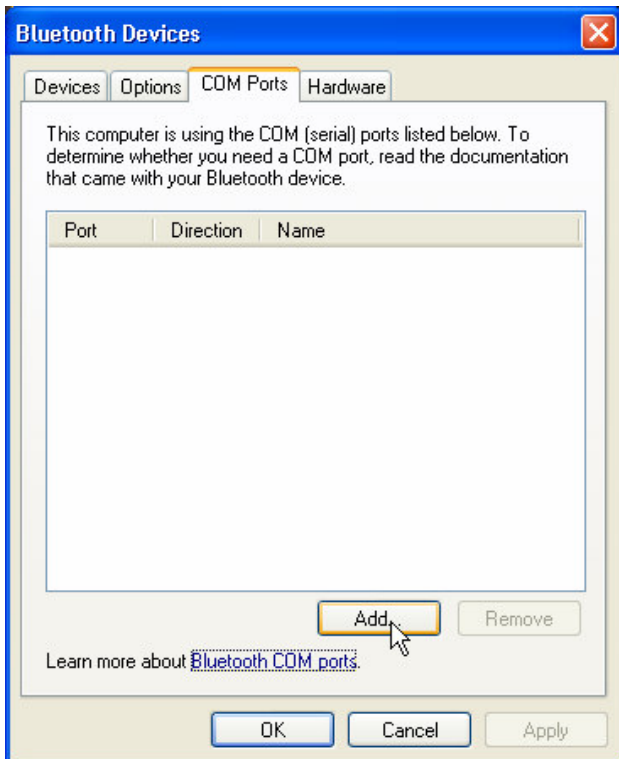
8. The dongle will now attempt to connect to the cassette. After a few seconds the following window will be shown. Click the finish button. Note: The yellow LED on the cassette will still be flashing yellow at this point, this is normal.



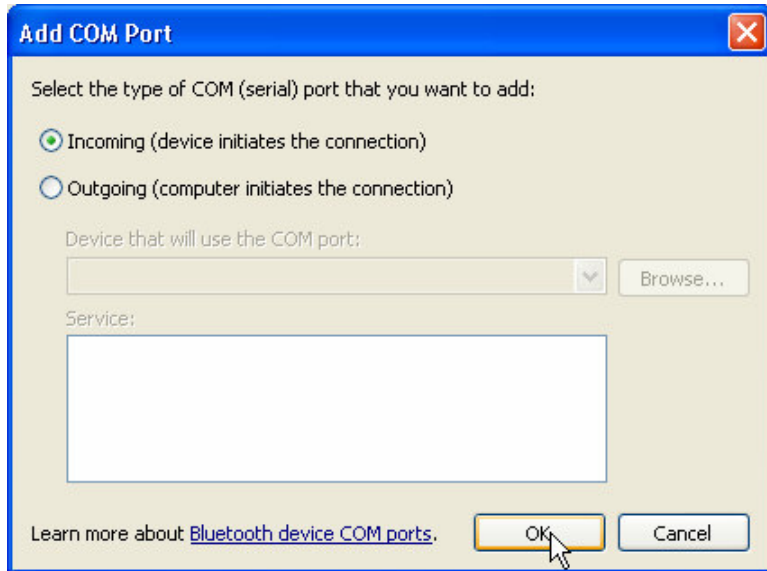
9. You should now see the following in the window from step 4.



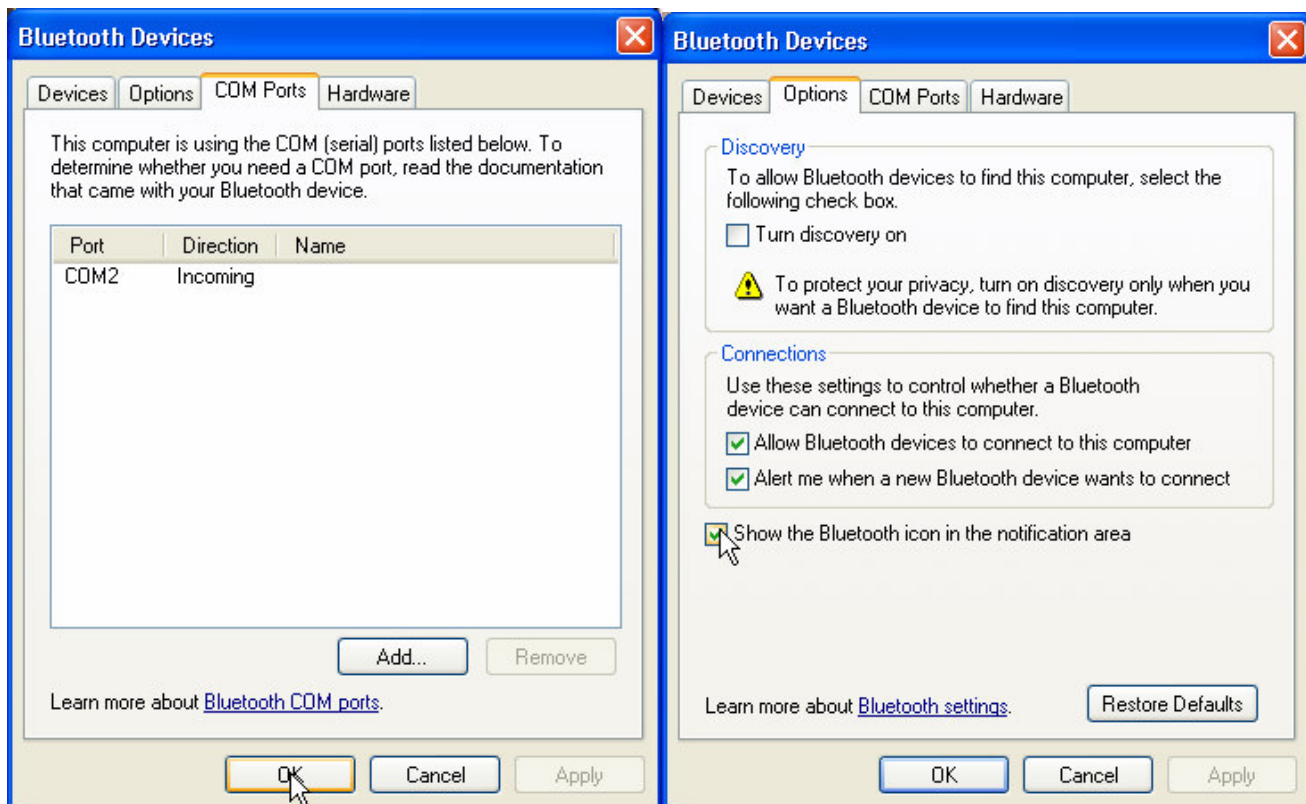
10. Click on the COM Ports tab, and then on the Add button as shown.



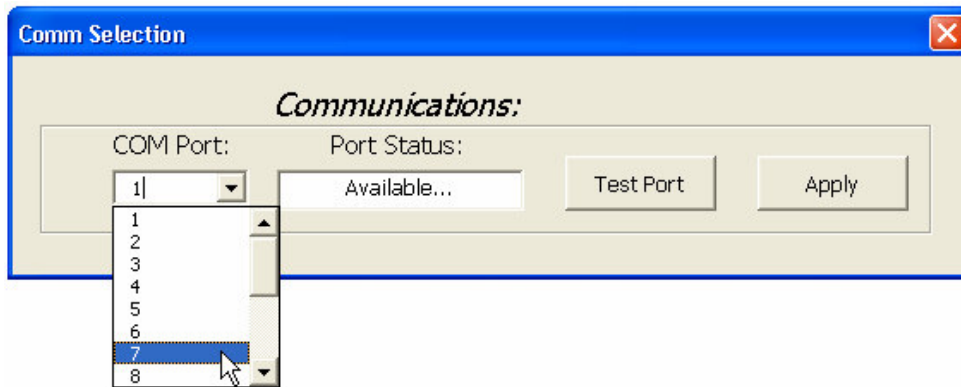
11. The following window should pop up. Select incoming if it's not selected then click on the OK button.



12. After a brief period of time, the window should be updated with a com port. The com port number will vary and you will want to take note of the number for when you start the Software Excel Template, in this case it's COM2. As long as the number does not exceed 16 this method will work. If it does exceed 16 then you will have to use the Toshiba Bluetooth software. (Note: You may want to click on the Options tab and select "Show the Bluetooth icon in the notification tray" so that you can access this screen again if need be.) Click OK.



13. You should now initiate the appropriate Excel template Software. Click on the “Communications” button near the bottom of the template or use Ctrl + C if there isn’t one. The following Window should appear.



Using the drop-down list, select the port value that was noted from before. Note: The picture shows 7 but should be 2 in this case. Click on the Apply button. The yellow LED on the cassette should stop flashing and the green “Connected” one should light up. The meter is now ready to use.

Note: The meter will remember which port you connected to, therefore the above procedure should never have to be repeated. In the future you will simply have to plug in the dongle, turn on the meter, and open the excel software and the meter should connect automatically and will be ready to use.

## **Using the Toshiba Bluetooth drivers(CD included)**

**\*\*\*Important Installation Note:** Before installing the Toshiba Bluetooth drivers or plugging in the dongle, it is highly recommended that you disable the Microsoft Bluetooth driver to avoid conflicts. The following is the procedure to disable the Microsoft Bluetooth driver:

1. Open the Control Panel which is found by Clicking on the Start button.
2. Double Click on the Administrative Tools Icon.
3. Next Double Click on the Services Icon.
4. There should be one or possibly two items in the list that should be disabled. The item(s) of interest will start with the word Bluetooth.
5. Double click on the item, and in the window that pops up under the general tab, there should be a Startup Type dropdown box. Select disabled from the list. If there are two items do the same for the other one.

6. Next Right click on the item(s) and select stop from the pop up menu.
7. The Microsoft Bluetooth drivers should now be disabled and you are now ready to proceed with the Toshiba Bluetooth Driver installation.

### **Toshiba Bluetooth Driver Installation:**

1. Insert the CD labeled “Bluetooth USB Adapter” in your CD Rom Drive.
2. If Auto-run is enabled then you should see a splash screen pop up. Click on the first button which is labeled “Install”. If the software installation program doesn’t start automatically then, click on My Computer and then on the CD Drive that contains the software.
3. Follow the onscreen instructions and **insert the USB Dongle WHEN PROMPTED..**
4. Wait for the USB Driver installation to complete. It may take a several minutes.

### **Establishing a Bluetooth Wireless Connection**

1. Load the Excel Software Template.
2. Turn on the Wireless Cassette.
3. The Yellow LED labeled “Bluetooth Status” should start flashing.
4. After between 2 – 6 seconds, the Yellow light should stop flashing and the Green light labeled “Bluetooth Connection” should turn on.
5. The meter is now ready for use. Follow the onscreen instructions in the template.

**NOTE: If the Green connection light doesn’t come on after 10 to 15 seconds, then you may have the wrong COM port selected. For the Windows Bluetooth driver, ensure that you have the correct port selected that was noted when setting up the connection. For the Toshiba driver, Refer to Communications Port Troubleshooting on the next page.**

# Communications Port Selection/Troubleshooting(Toshiba Driver)

- If the meter is not making a connection, then the com port is most likely configured incorrectly.

- To verify which port the meter will connect to, Click on Start, Control Panel.

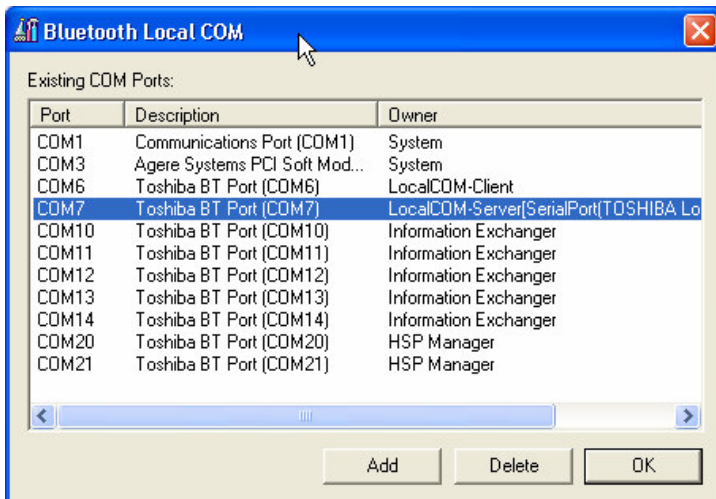
In XP Classic view you would click on the Bluetooth Local Com icon.



In the Category view, you would have to click on “Printers and other hardware” icon and then on Bluetooth Local Com.



- You should now see a screen similar to the one below:

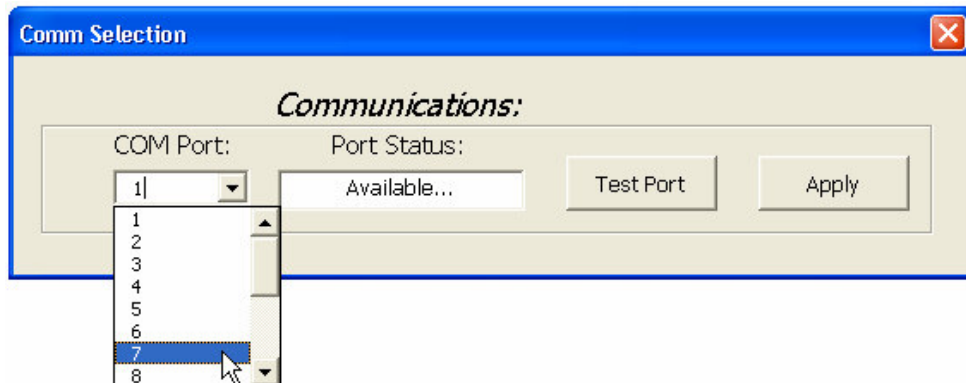


-The port that has the following under the “Owner” section is the correct one:

**LocalCom-Server[SerialPort(TOSHIBA LocalCOM)].**

-Note the Port value which in this case is COM7.

- If the Excel Software Template Template hasn't been loaded yet, do so now.
- Once the template has been loaded, click on Ctrl+C or click on the communications button(software dependant). A screen should pop up labeled "Comm Selection".
- Using the drop-down list, select the port value that was noted from before, which in this case was 7.



- Click on Apply.
- The "Bluetooth Connection" light should now be green.

**Note: The software will remember which port was last used so you only have to do this procedure the first time you use the software or unless the meter is used on a different computer.**